



Software update procedure – P6 Life Android™ 5.1, Lollipop

These are the advantages of updating the soft:

- *Updating the operating system from Android 4.4 KitKat to Android 5.1 Lollipop;*
- *Find a major change of the interface(design): natural moves, shadows and several visual effects etc;*
- *For preinstalled apps a change of interfaces: dialling display, settings, camera menu, shortcuts etc;*
- *A more efficient resources management ;*



ATTENTION! The battery must be fully charged, and the phone must be turned off when initializing the procedure.




ATTENTION! Do not interrupt the updating operation under any circumstances.



ATTENTION! Updating the operating system will lead to total removal of personal information and installed apps.

1. Download the archives: "**Update_5.1_P6_Life_22.12.2015**", "**SP_MDT_exe_v3.1540.00.00**" and "**Driver.zip**" on a desktop or laptop. Unzip into a folder all 3 archives from above.

2. From **Driver** folder, install all necessary drivers. They are compatible with Windows XP, Windows 7, Windows 8.

Windows 10. Open up  **UsbDriverSetup** executable and follow the steps in order to install the driver.

3. In "**SP_MDT_exe_v3.1540.00.00**" folder, double-click on the **SPMultiPortFlashDownloadProject** executable and **Open**, then make sure that **ScanComportType=1** , save (**File – Save**) and close document as shown below:



SP_MDT_exe_v3.1540.00.00

File Home Share View

Local Disk (C:) > SP_MDT_exe_v3.1540.00.00

Name	Date modified	Type	Size
Microsoft.VC90.CRT.manifest	9/28/2015 3:55 PM	MANIFEST File	1 KB
miodll.dll			
msvc90.dll			
msvcp90.dll			
msvcr90.dll			
MTK_AllInOne_DA.bin			
MTK_DATABASE			
NVRAM_BACKUP			
protected_region			
readback			
setting			
SLA_Challenge.dll			
SLA_Challenge.lib			
SP_META_Wrapper.dll			
SPBootMode.dll			
SPMETA_DLL.dll			
SPMultiPortFlashDownloadProject.c...	7/29/2016 12:26 PM	Configuration sett...	4 KB
SPMultiPortFlashDownloadProject			
SPMultiPortFlashDownloadProject			
SPMultiPortFlashDownloadProject			
SPMultiPortFlashDownloadProject.lib	9/28/2015 5:34 PM	LIB File	14 KB
SPMultiPortFlashDownloadProject.map	9/28/2015 5:34 PM	MAP File	1,827 KB

43 items 1 item selected 3.03 KB

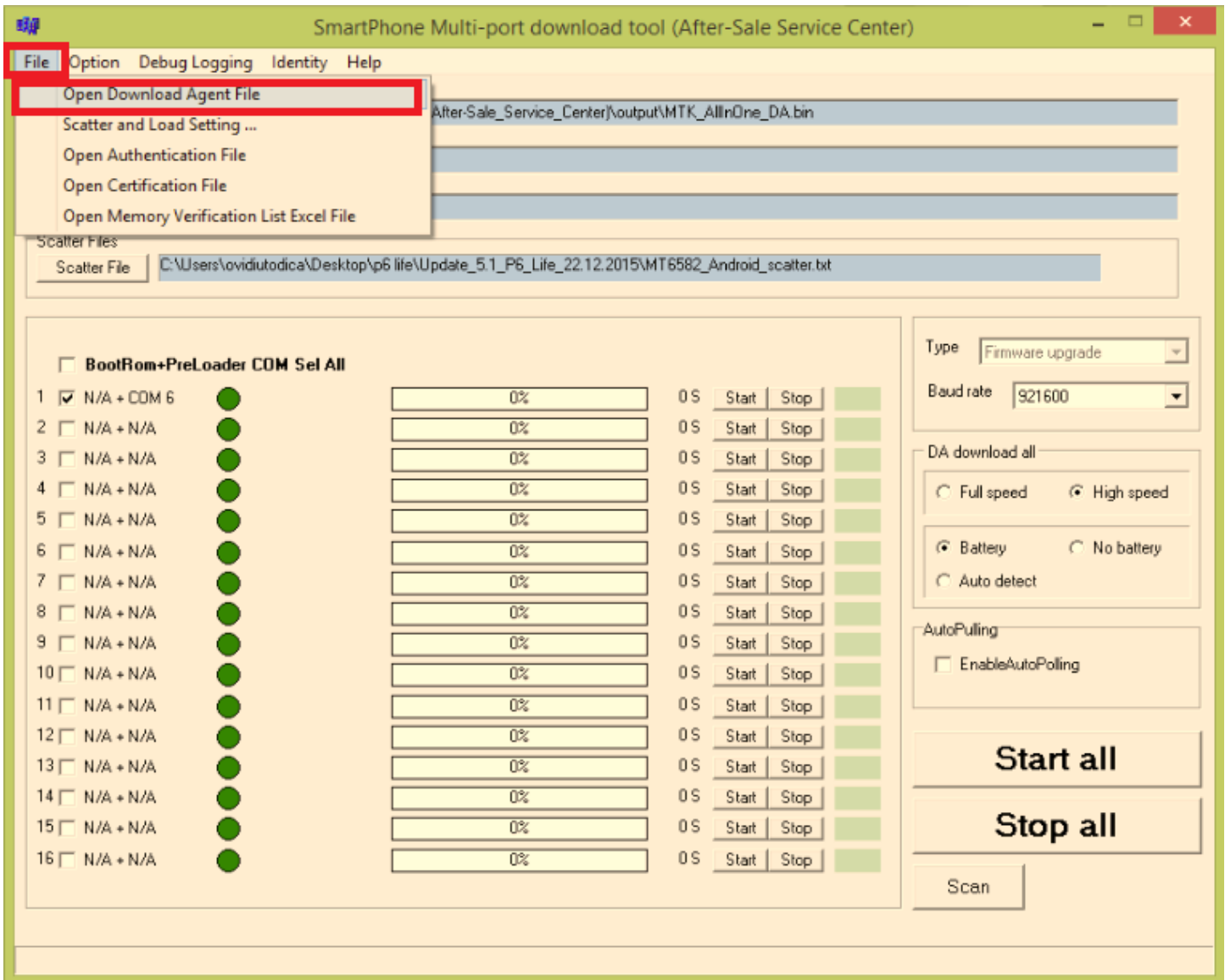
- Open
- Print
- Edit
- Scan with AVG
- Permanently shred with AVG
- Open with
- Add to archive...
- Add to "SPMultiPortFlashDownloadProject.rar"
- Compress and email...
- Compress to "SPMultiPortFlashDownloadProject.rar" and email
- Send to
- Cut
- Copy
- Create shortcut
- Delete
- Rename
- Properties



```
SPMultiPortFlashDownloadProject - Notepad
File Edit Format View Help
[form]
Baseband chip=auto detect
External clock=26mhz
BROM_DLL logging=yes
META_DLL logging=yes
Eboot_DLL logging=yes
Baudrate=921600
ComportEnabled=0x01
Auto polling enabled=0
Auto polling count=0
Type=Firmware upgrade
Force_ALL_IMAGE_DL=yes
Force_Checksum_Version=V1
Auth file=
Cert file=
Format FAT range=auto
ScanComportType=1
ForceWatchdogReset=no
ForceWatchdogResetTimeout=0
Enable_Secro_Reworking_Feature=no
```



- In “**SP_MDT_exe_v3.1540.00.00**” folder, double-click on the **SPMultiPortFlashDownloadProject** executable.
- Click on the **File** option of **SP_MDT_exe_v3.1540.00.00** and select **MTK_AllInOne_DA.bin** file from **SP_MDT_exe_v3.1540.00.00** folder, as shown below:





SmartPhone Multi-port download tool (After-Sale Service Center)

File Option Debug Logging Identity Help

DA file name
Authentication file
Certification File
Scatter Files
Scatter File

BootRom+
1 N/A + COM
2 N/A + N/A
3 N/A + N/A
4 N/A + N/A
5 N/A + N/A
6 N/A + N/A
7 N/A + N/A
8 N/A + N/A
9 N/A + N/A
10 N/A + N/A
11 N/A + N/A
12 N/A + N/A
13 N/A + N/A
14 N/A + N/A
15 N/A + N/A
16 N/A + N/A

0%	0 S	Start	Stop
0%	0 S	Start	Stop
0%	0 S	Start	Stop
0%	0 S	Start	Stop
0%	0 S	Start	Stop
0%	0 S	Start	Stop

Open

Look in: output

Name	Date modified	Type
backup_and_restore_data	9/28/2015 3:55 PM	File folder
Document	1/11/2016 12:01 PM	File folder
MTK_AllInOne_DA.bin	9/28/2015 2:34 PM	BIN File

File name: MTK_AllInOne_DA
Files of type: Bin File (*.bin)

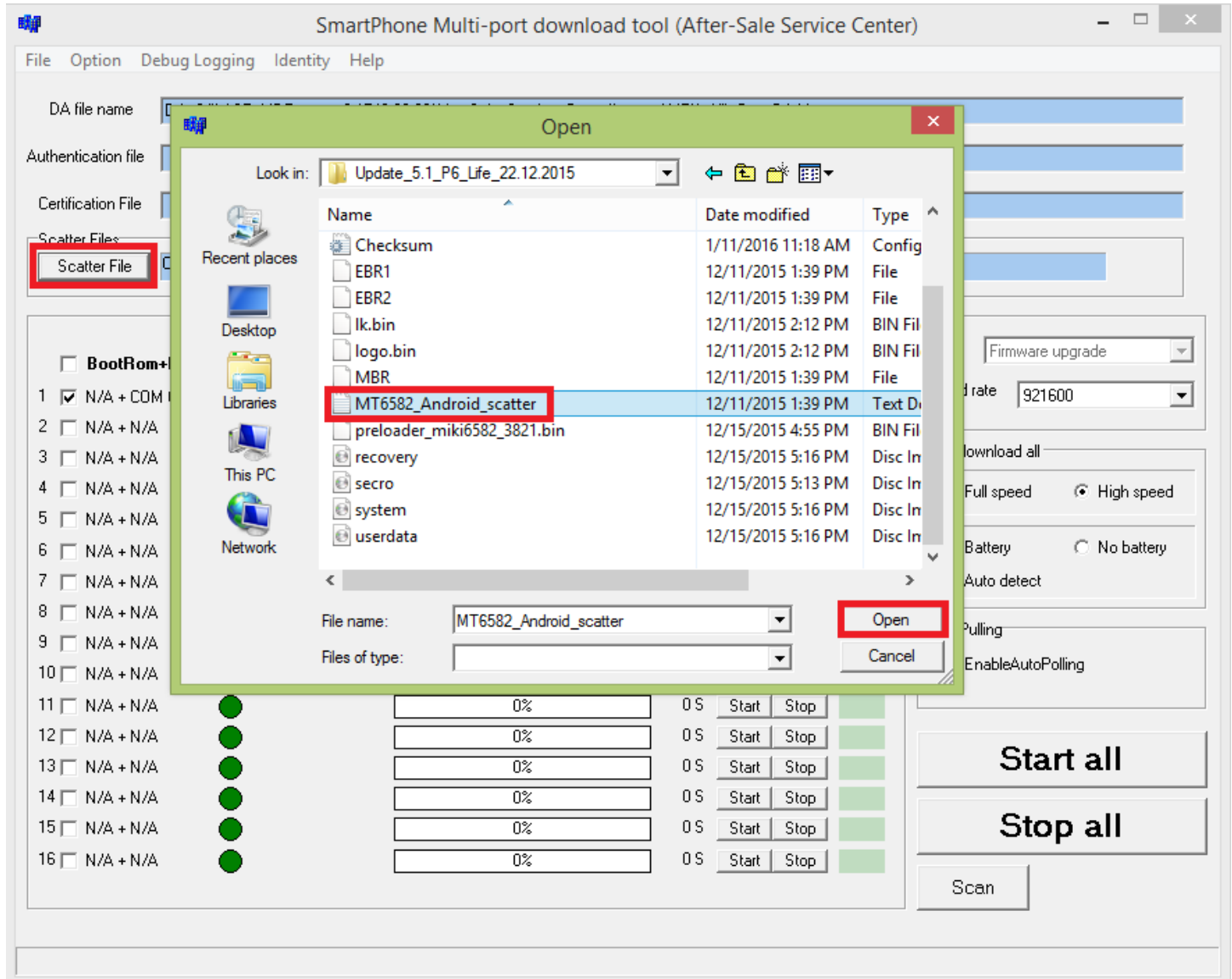
Open
Cancel

Firmware upgrade
Rate: 921600
Download all
Full speed High speed
Battery No battery
Auto detect
Pulling
EnableAutoPolling

Start all
Stop all
Scan



6. Click on the **Scatter-File** option of the tool's flash and select **MT6582_Android_scatter** file from **Update_5.1_P6_Life_22.12.2015** folder, and scan the phone as shown below:





7. To detect the USB port, click **SCAN** button and connect the phone while turned off.

SmartPhone Multi-port download tool (After-Sale Service Center)

File Option Debug Logging Identity Help

DA file name: D:\p6 life\SP_MDT_exe_v3.1540.00.00(After-Sale_Service_Center)\output\MTK_AllInOne_DA.bin

Authentication file: [Empty]

Certification File: [Empty]

Scatter Files

Scatter File: D:\p6 life\Update_5.1_P6_Life_22.12.2015\MT6582_Android_scatter.txt

<input type="checkbox"/> BootRom+PreLoader COM Sel All			
<input checked="" type="checkbox"/>	N/A + COM 6	Scan Success!	100%
<input type="checkbox"/>	N/A + N/A		0%
<input type="checkbox"/>	N/A + N/A		0%
<input type="checkbox"/>	N/A + N/A		0%
<input type="checkbox"/>	N/A + N/A		0%
<input type="checkbox"/>	N/A + N/A		0%
<input type="checkbox"/>	N/A + N/A		0%
<input type="checkbox"/>	N/A + N/A		0%
<input type="checkbox"/>	N/A + N/A		0%
<input type="checkbox"/>	N/A + N/A		0%
<input type="checkbox"/>	N/A + N/A		0%
<input type="checkbox"/>	N/A + N/A		0%
<input type="checkbox"/>	N/A + N/A		0%
<input type="checkbox"/>	N/A + N/A		0%
<input type="checkbox"/>	N/A + N/A		0%
<input type="checkbox"/>	N/A + N/A		0%

Type: Firmware upgrade

Baud rate: 921600

DA download all

Full speed High speed

Battery No battery

Auto detect

AutoPulling

EnableAutoPolling

Start all

Stop all

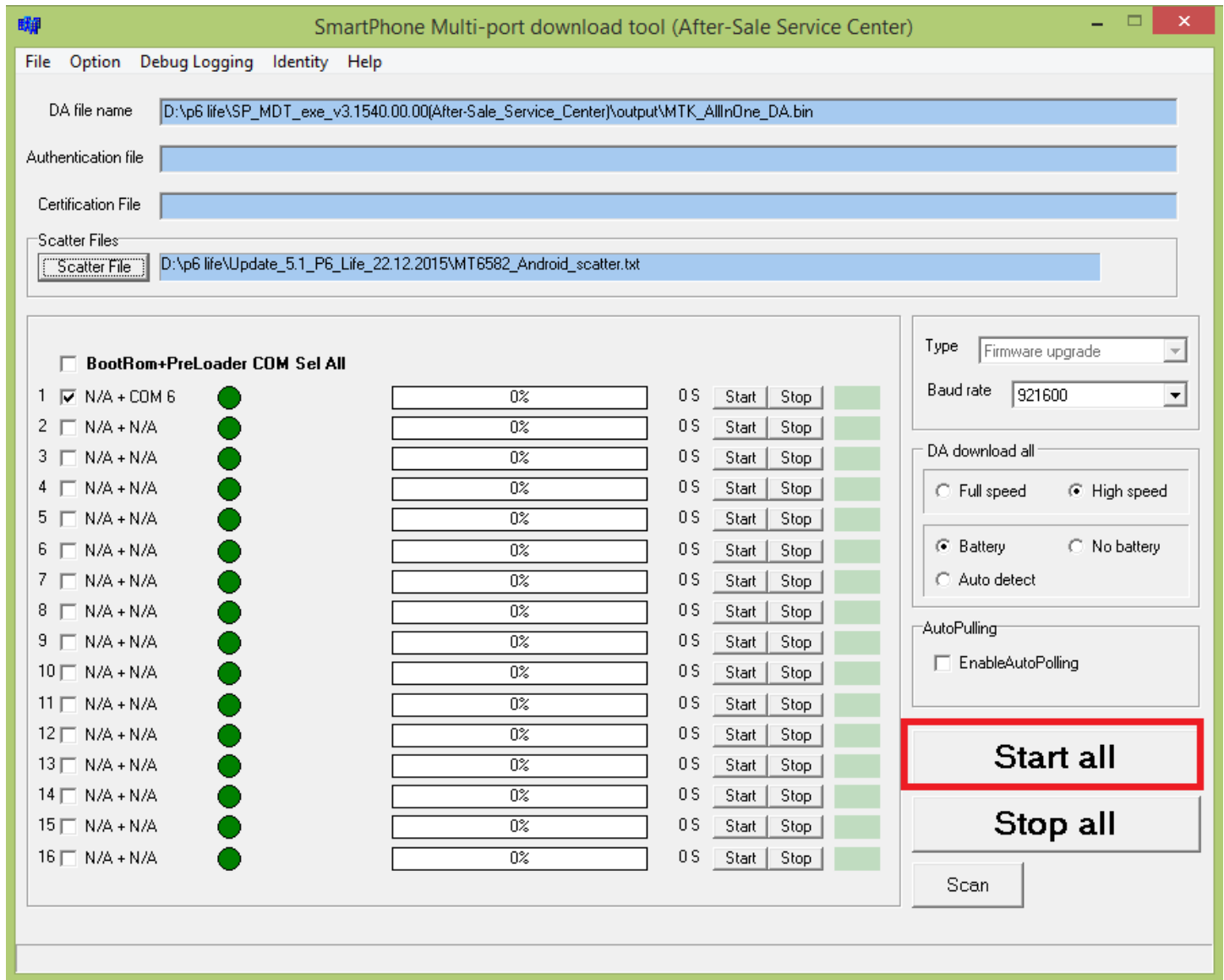
Scan



ATTENTION! In case that the USB port hasn't been detected make sure you have followed the exact steps from Step 3.



8. After scanning the port, unplug the mobile, click **Start all** and reconnect the phone, while turned off, to the same USB port. (see image below)





9. The tool will automatically detect the USB port on which the phone was connected (to desktop or laptop) and the softing will automatically start, as in the image shown below:

The screenshot shows the 'SmartPhone Multi-port download tool (After-Sale Service Center)' interface. The 'DA file name' is set to 'D:\p6 life\SP_MDT_exe_v3.1540.00.00(After-Sale_Service_Center)\output\MTK_AllInOne_DA.bin'. The 'Scatter File' is 'D:\p6 life\Update_5.1_P6_Life_22.12.2015\MT6582_Android_scatter.txt'. The 'Type' is 'Firmware upgrade' and the 'Baud rate' is '921600'. The 'DA download all' section has 'High speed' selected. The 'AutoPolling' section has 'EnableAutoPolling' unchecked. The 'Start all' and 'Stop all' buttons are visible. A status bar at the bottom shows the command: 'Format EMMC flash: begin addr(0x000000002920000), length(0x0000001CEA60000), Auto Polling number:0'.

Port	Device	DL	Time	Start	Stop
1	<input checked="" type="checkbox"/> N/A + COM 6	9%	40 S	Start	Stop
2	<input type="checkbox"/> N/A + N/A	0%	0 S	Start	Stop
3	<input type="checkbox"/> N/A + N/A	0%	0 S	Start	Stop
4	<input type="checkbox"/> N/A + N/A	0%	0 S	Start	Stop
5	<input type="checkbox"/> N/A + N/A	0%	0 S	Start	Stop
6	<input type="checkbox"/> N/A + N/A	0%	0 S	Start	Stop
7	<input type="checkbox"/> N/A + N/A	0%	0 S	Start	Stop
8	<input type="checkbox"/> N/A + N/A	0%	0 S	Start	Stop
9	<input type="checkbox"/> N/A + N/A	0%	0 S	Start	Stop
10	<input type="checkbox"/> N/A + N/A	0%	0 S	Start	Stop
11	<input type="checkbox"/> N/A + N/A	0%	0 S	Start	Stop
12	<input type="checkbox"/> N/A + N/A	0%	0 S	Start	Stop
13	<input type="checkbox"/> N/A + N/A	0%	0 S	Start	Stop
14	<input type="checkbox"/> N/A + N/A	0%	0 S	Start	Stop
15	<input type="checkbox"/> N/A + N/A	0%	0 S	Start	Stop
16	<input type="checkbox"/> N/A + N/A	0%	0 S	Start	Stop



10. The completion of software writing will be notified with **PASS** message, as shown below:

Item	Check	Description	Status	Progress	Time	Start	Stop	Result
1	<input checked="" type="checkbox"/>	N/A + COM 6	●	100%	284 S	Start	Stop	PASS
2	<input type="checkbox"/>	N/A + N/A	●	0%	0 S	Start	Stop	
3	<input type="checkbox"/>	N/A + N/A	●	0%	0 S	Start	Stop	
4	<input type="checkbox"/>	N/A + N/A	●	0%	0 S	Start	Stop	
5	<input type="checkbox"/>	N/A + N/A	●	0%	0 S	Start	Stop	
6	<input type="checkbox"/>	N/A + N/A	●	0%	0 S	Start	Stop	
7	<input type="checkbox"/>	N/A + N/A	●	0%	0 S	Start	Stop	
8	<input type="checkbox"/>	N/A + N/A	●	0%	0 S	Start	Stop	
9	<input type="checkbox"/>	N/A + N/A	●	0%	0 S	Start	Stop	
10	<input type="checkbox"/>	N/A + N/A	●	0%	0 S	Start	Stop	
11	<input type="checkbox"/>	N/A + N/A	●	0%	0 S	Start	Stop	
12	<input type="checkbox"/>	N/A + N/A	●	0%	0 S	Start	Stop	
13	<input type="checkbox"/>	N/A + N/A	●	0%	0 S	Start	Stop	
14	<input type="checkbox"/>	N/A + N/A	●	0%	0 S	Start	Stop	
15	<input type="checkbox"/>	N/A + N/A	●	0%	0 S	Start	Stop	
16	<input type="checkbox"/>	N/A + N/A	●	0%	0 S	Start	Stop	



ATTENTION! Do not interrupt the writing software operation under any circumstances. This operation is made on your own risk, by following precisely all the steps from above.



ATTENTION! The first sequence of boot-ing, after re-writing the software, can take up to 10 minutes.